



## FY19 Dallas SWE Elections

### Candidate Bios

# Zaineb Ahmad

## (President Candidate)

**Company/role:** I earned my BS in Biomedical Engineering from Washington University in St. Louis and an MS in Mechanical Engineering from University of Alabama at Birmingham. I previously worked in Healthcare IT as a Business Analyst, a role that brought me to Dallas in 2014. I currently work at Rockwell Collins as a Systems Engineer.



**Why you want to fill the nominated position:** I would like to bring my past SWE experience to the role of President of Dallas SWE, contributing to its stability and growth, especially with upcoming Society Governance changes. I am dedicated to the goals and mission of SWE. Dallas SWE has been an essential part of my personal and professional life. Serving as Dallas SWE President would be my way to give back to Dallas SWE, while expanding my involvement in Dallas SWE as a leader.

**Previous SWE experience:** I joined SWE in college at WashU and immediately got involved with STEM outreach, professional development activities, and Society conferences. After returning to SWE as a professional, I held multiple leadership positions in SWE at the local, region, and society level.

I served two terms as Dallas SWE Vice President of Membership in FY16 and FY17, expanding the roles of the membership and award committees. I also served on multiple committees, including Programming (FY15), Nominating (FY17), and Outreach (FY18). I served as Awards Chair from FY14-FY17.

In SWE Region C, I served on the Awards committee and vetted candidates as a member of the Nominating Committee in FY16 and FY18. At the Society level, I have been a SWE Freshmen and Upperclassmen Scholarship Reviewer since FY14.

**Your favorite thing about SWE:** My favorite thing about SWE is the sense of community that includes being surrounded by passionate, inspirational, and encouraging women.

# Amanda Alsbrook

## (Executive Vice President Candidate)

**Company/role:** I am currently a Project Engineer at Orthofix working on Spinal projects in Research and Development. I have roughly 9 years experience in the Medical Device industry and 3 years in Oil & Gas. I graduated from Christian Brothers University in 2006 with a BS in Mechanical Engineering.



**Why you want to fill the nominated position:** One of the main reasons I joined SWE was for the professional development opportunities. As Executive Vice President, I would like to continue the great work that is already underway. I feel professional development and networking are important to everyone's career, and I would like to give back to Dallas SWE by working with the Programs Committee to arrange monthly professional development programs.

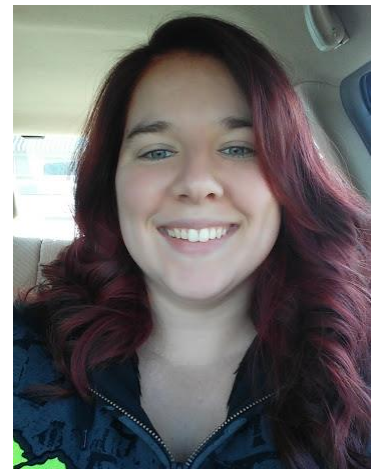
**Previous SWE experience:** For the last year I have been involved with Dallas SWE after recognizing that I wanted more opportunities for professional development and networking. I have served as the Registration Chair for the last two Design Your World STEM Conferences for Girls and greatly enjoyed working with the wonderful group of women on the planning committee. Their teamwork and dedication was amazing, and I would like to expand my role in the SWE organization to also serve as an officer.

**Your favorite thing about SWE:** Meeting intelligent and inspiring technical women within the organization and being able to work with Outreach to introduce or expand young girls knowledge of STEM.

# Shannon Cruise

## (Vice President of Membership Candidate)

**Company/role:** Shannon Cruise earned a B.S. in Construction Engineering Technology from University of Toledo in 2011 and is a Facilities Space Planner for Raytheon, after relocating to Cleveland five years ago. In October of 2012, she joined the Dallas chapter of SWE.



Shannon has also been a volunteer in the community, mostly for Equest Therapeutic Horsemanship and has been a witness to the healing power of equine therapy. She has won several awards for her volunteer work and plans to apply her positivity, compassion, and drive to the role of Vice President of Membership.

**Why you want to fill the nominated position:** Shannon would like to get more involved with SWE and show others what the chapter means to her by working to increase and retain membership. She enjoys networking and loves to spread the word about SWE.

**Previous SWE experience:** Shannon has been a SWE member for about five years. In FY18 she served as chair of the Membership Committee.

**Your favorite thing about SWE:** Shannon really loves the community and networking that SWE provides as well as the wonderful friendships that she has made during her time with the chapter.

# Terriekka Cardenas

## (Vice President of Outreach Candidate)

**Company/role:** Terriekka holds a B.S. in Chemical Engineering from the University of Tulsa and AAS in Computer-Aided Drafting and Design from Mountain View College. She is a certified Lean Six Sigma Green Belt and Yellow Belt. From her enjoyment in seeing inanimate objects come together to make something useful, she worked as an engineer in manufacturing industry for over 13 years in varied capacities and department leadership roles at companies such as Valspar, Momentive Specialty Chemicals, PepsiCo, and Ecolab. In order to gain more flexibility and availability for her family, Terriekka dove head first into entrepreneurship and started her own consulting firm, Perceptive Engineering. The firm is a provider of consultancy services across design, new product development, process monitoring and other technical and project management business needs. Outreach and serving the community are very important to her. With her belief that no one should be denied exposure to STEM careers, she created the organization Full STEAM Ahead. She and other STEM professionals collaborate to facilitate workshops and classes surrounding various disciplines and skills in a fun and engaging atmosphere. Students are shown how STEM is infused in their everyday lives. The primary focus is to target demographics of youth whom are grossly under exposed to the subject matter. In 2008, Terriekka became the first African American woman to be employed as the Site Engineer in the US plant operations for the then Hexion Specialty Chemicals. She actively serves as the President of the Board of Directors for SimiDigi, Inc., a creator of simulated digital interactive workforce training. Additionally, she is the STEAM Program Coordinator for Destiny World Children's Ministry. She has been a mentor to students participating in the Future City Competition, where her inaugural 2016 team received special awards in multiple categories.



**Why you want to fill the nominated position:** Outreach is a passion of mine. I'm constantly looking for challenging and rewarding opportunities to channel that passion. I believe as the VP of Outreach, I will be able to not only maintain the standard of excellence set by my predecessors, but push our members to join in ascending above them.

**Previous SWE experience:** I served as FY18 Dallas SWE Vice President of Outreach. Prior to that, I was heavily involved as a DYW and other Dallas SWE outreach volunteer.

**Your favorite thing about SWE:** I've learned over the years that it is imperative to develop a solid network of support as a minority in the STEM workforce. Involvement in SWE on the collegiate level provided that for me. It was sort of a sisterhood, the one place where you weren't the only girl. As a professional, being apart of Dallas SWE has shown me the importance of advocacy for young women and the impact of being present for them. I have derived so much personal and professional fulfillment serving as a part of the outreach committee for the chapter as it strives continually to remain an active pillar of the community. This organization personifies my belief whole hearted that once armed with knowledge, one can have a solid impact on the world around them and make effective changes right where they are, regardless of their age, gender, and socioeconomic background.

## Rana Karimi (Secretary Candidate)



**Company/role:** I currently work for PepsiCo as an Engineering Project Manager, managing Packaging Automation Projects for Frito-Lay plants nationwide. I work in a cross-functional team with international suppliers to deploy robotics and automation to improve packaging productivity. Before joining PepsiCo, I worked for oil service company Schlumberger in Houston for four years, where I gained experience in operations and held engineering roles in manufacturing, quality, and planning. In May 2018, I will be transitioning to a career in consulting and joining Accenture as a Management Consultant in the Resources Operating Group. I graduated in 2013 with a Bachelor degree in Mechanical Engineering from the University of Texas at Austin.

**Why you want to fill the nominated position:** I would like to serve Dallas SWE as Secretary because I love this organization and our mission of advancing women in engineering and STEM. This objective is very important to me and serving as a leader in Dallas SWE will allow me to play a bigger role in achieving this and better understand the inner workings of the organization. Specifically, I would like to serve as Secretary because my strengths in organization, communication, and documentation will help me succeed in this role, since record keeping and coordinating communication are key responsibilities of Secretary.

**Previous SWE experience:** My membership in SWE began ten years ago as a collegiate member of the University of Texas at Austin collegiate section. While at UT, I served as Community Affairs Director where I led our outreach efforts and managed our collegiate presence in the Austin community. After graduation, I joined the SWE-Houston Area section and was active in outreach events and volunteering. Upon moving to Dallas, I have taken on more leadership in SWE. I am currently serving as the Webmaster where I inform members about volunteering opportunities, networking events, and professional development meetings. This year, I also co-chaired the Parent Educator Panel of Design Your World, and have also started a career oriented book club to facilitate greater networking and knowledge sharing on subjects pertaining to career growth and development. Throughout my membership, I have enjoyed attending both Regional and National conferences. In all the places I have lived, SWE has been an important part of my personal and professional development.

**Your favorite thing about SWE:** The strength of community in the SWE network and how much we support each other is my favorite thing about SWE. There is a broad range of experience and talent in this organization that fosters continual self-improvement and professional development. From the casual discussions about our work experiences at the book club, to the advice on making a career move from experienced peers, SWE's diverse network is an excellent cohort to learn from and grow with.

# Liong So

## (Investment Committee Candidate)



**Company/role:** Liong is a Senior Project Manager with Department of Public Works, City of Dallas. Liong holds a Master in Business Administration (MBA) from Southern Methodist University (SMU), Dallas, Texas and a Master of Science (MS) in Civil/Geotechnical Engineering from New Jersey Institute of Technology (NJIT), Newark, New Jersey and a Bachelor of Science (BS) in Civil/Structural Engineering from Trisakti University, Jakarta, Indonesia. She also has a Texas Professional Engineer (PE) license and a Certified Project Management Professional (PMP). This year she got Lean Green Six Sigma Certification (LGSS).

**Why you want to fill the nominated position:** I always like to put my investment knowledge to be use for Dallas SWE. I want to continue to be part of the organization that continues to provide a scholarship to young and bright future women in STEM.

**Previous SWE experience:** Past member of the Investment committee of SWE-Dallas Investment.

Dallas SWE – member of the month (November 2017)

**Your favorite thing about SWE:** My favorite thing about SWE is the opportunity to networking and to meet interesting women from many disciplines of science and engineering.

**Pam Duffy**  
**(Investment Committee Candidate)**



**Company/role:** Senior Product Manager, Lennox International

**Why you want to fill the nominated position:** I am interested in the long-term financial health and sustainability of the SWE Dallas organization.

**Previous SWE experience:** I have previously served SWE Dallas as a Section Representative in FY17 and have served in other roles in various other areas of SWE such as SWE Atlanta, SWE Region D, and Society-level committees.

**Your favorite thing about SWE:** Connecting women engineers with each other is a powerful way to support personal and career goals in an industry where it may be difficult to find individuals to relate to in any given engineering organization.